

WG Series

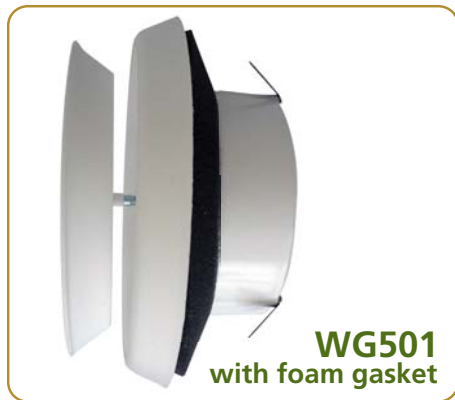
Whisper Grille / Diffuser



WG501



WG601



WG501
with foam gasket



WG401 installation using
Primex's 'Squeeze Elbow'



EB4x90
Squeeze
Elbow
(for use
with
WG401)

Features

Dual Flow: air supply or exhaust • Standard color is white • Strong stainless steel grip provides easy installation and a snug fit • Extra thick foam gasket allows for tight seal on uneven surfaces • Supplied lock nut fine tunes the air settings • Extra long collar maximizes air flow • **WG401** vent is compatible with Primex's "squeeze elbow" accessory: **EB4x90** • Easy to install and remove • Very quiet during operation • Will not rust or dent

| Part # | Size | Description | Packaging |
|---------|-------------|---|-----------|
| WG401 | 4" Diameter | Adjustable air diffuser with shallow base for use w/ EB4x90 | 25/box |
| WG401XB | 4" Diameter | Adjustable air diffuser with extra long neck | 25/box |
| WG501 | 5" Diameter | Adjustable air diffuser | 25/box |
| WG601 | 6" Diameter | Adjustable air diffuser | 25/box |